

Border Of Premises (Red)

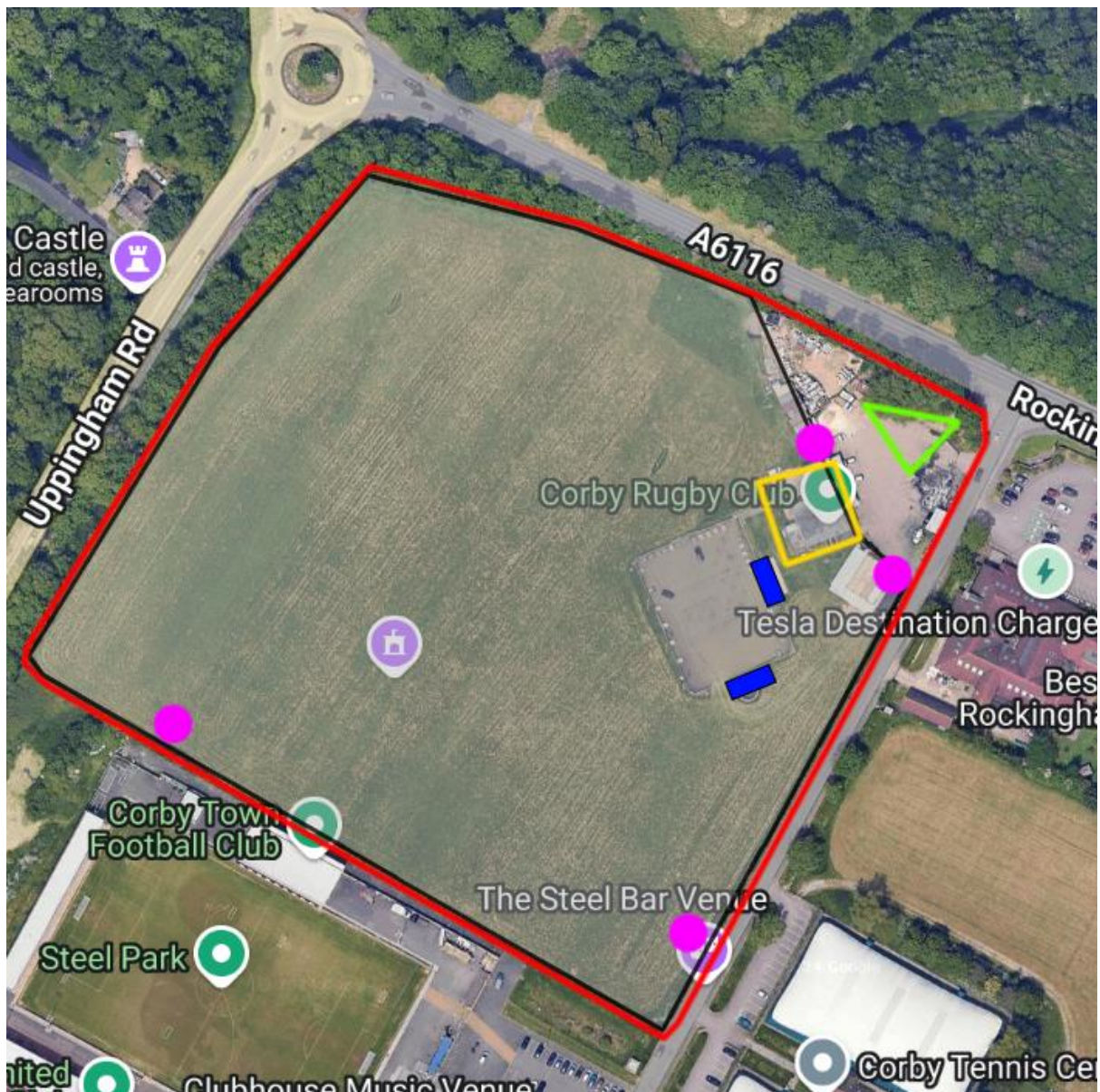
Area for licensable activity (Black)

Fire Assembly Point (Green)

Inside Building (Yellow)

Bar (Blue)

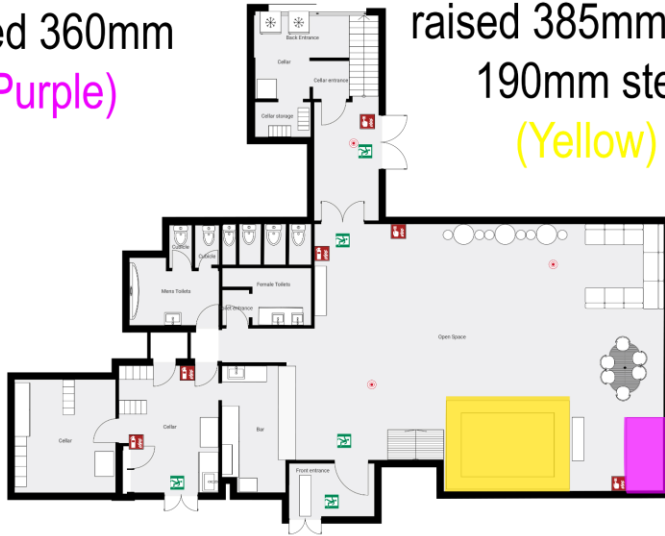
Entrances Exits/Emergency Exits (Purple)



▼ Ground Floor

DJ Booth  
raised 360mm  
(Purple)

Downstairs Stage  
raised 385mm with  
190mm step  
(Yellow)



▼ 1st Floor

Upstairs Back  
Stage  
raised 100mm  
(RED)

Upstairs Bar &  
Stage  
raised 115mm  
(BLUE)

